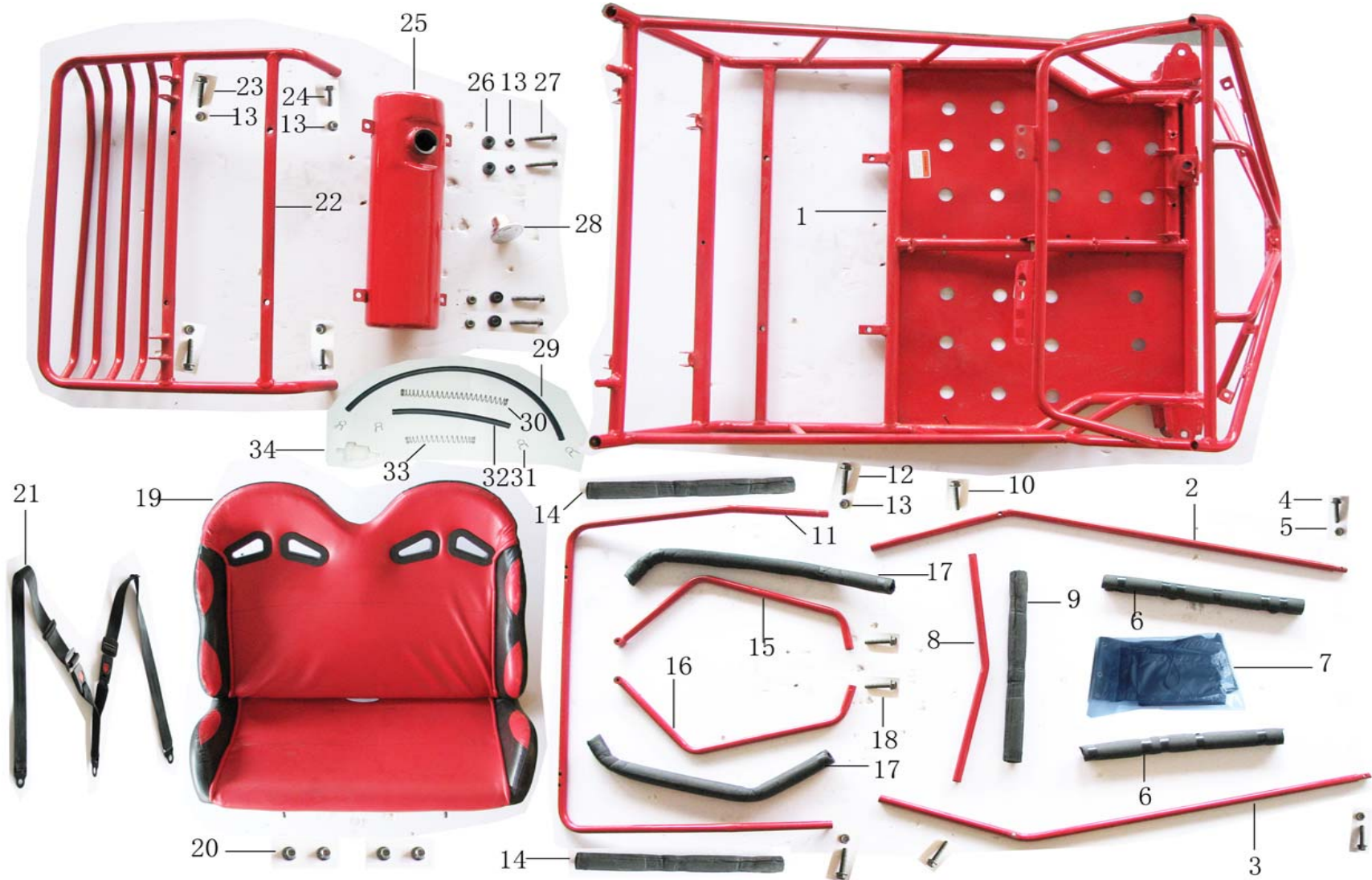


PARTS CATALOGUE

XT90GK-3 (90PGO)

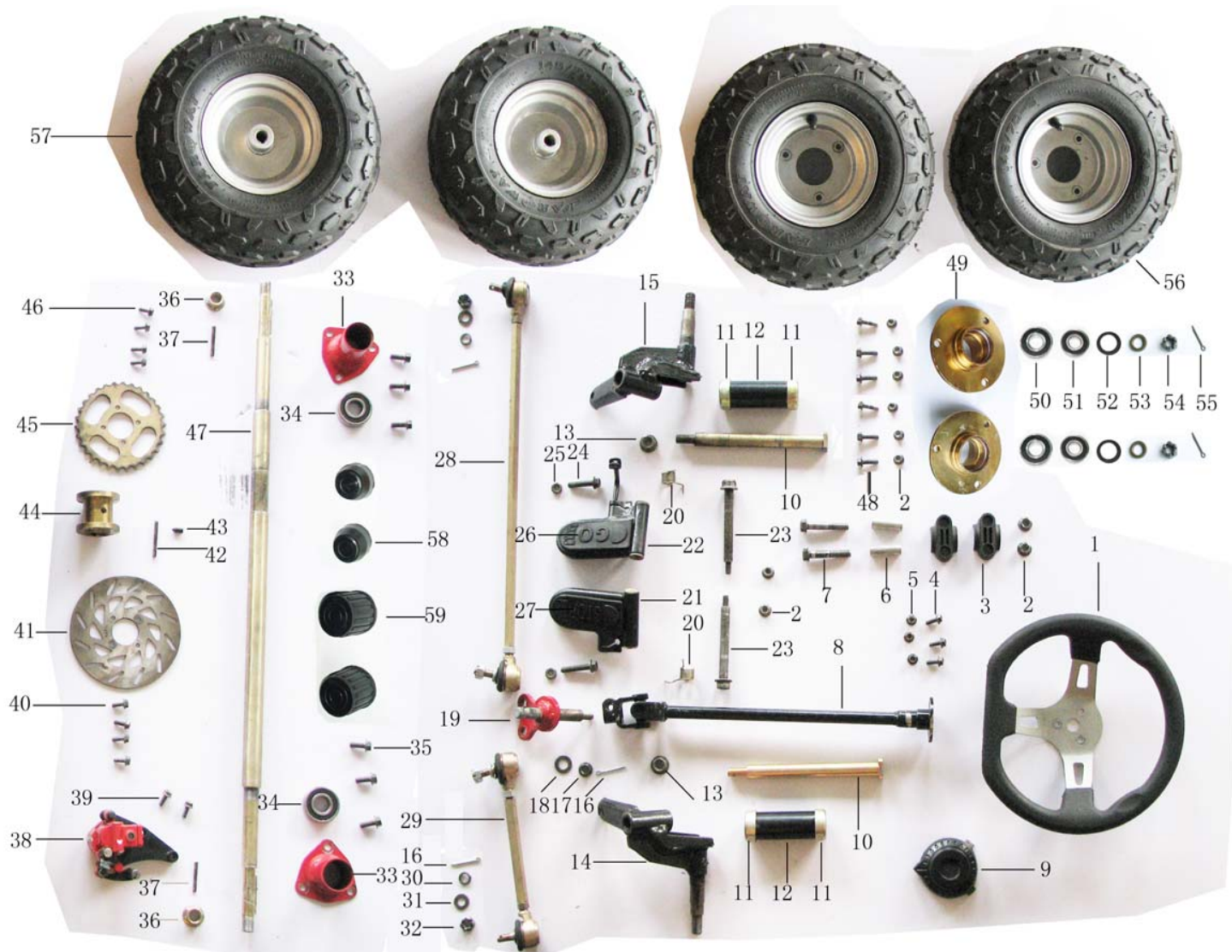


KINROAD XINTIAN MOTORCYCLE MANUFACTURE CO., LTD



NO.	Part NO.	Description	Description in English	数量Qty	
1	KC001010000-3	主车架	FRAME COMP.	1	
2	KC001150010	左保险杠	LEFT BRUSH GUARD BAR ,MAIN	1	
3	KC001150012	右保险杠	RIGHT BRUSH GUARD BAR ,MAIN	1	
4	GB5787-86	六角法兰螺栓M6×30	BOLT M6×30	2	
5	GB6187-86	六角法兰自锁螺母 M6	LOCK NUT FLANGE M6	2	
6	KC001150011	左右保险杆保护套	FOAM COVER	2	
7	KH202090000	顶棚、护套	TOP AND GUARD BAR FABRIC	1	
8	KC001150008	保险杠横杆	BRUSH GUARD BAR ,CENTER	1	
9	KC001150014	保险杠横杆保护套	FOAM COVER1	3	
10	GB5787-86	六角法兰螺栓M8×40	BOLT M8×40	4	
11	KC001150009	中保险杠架	BRUSH GUARD BAR ,MAIN	1	
12	GB5787-86	六角法兰螺栓M8×40	BOLT M8×40	4	
13	GB6187-86	六角法兰自锁螺母 M8	LOCK NUT FLANGE M8	10	
14	KC001150013	中保险杠架保护套	FOAM COVER 2	2	
15	KC001150015	右后保险杠连接架	REAR BRUSH GUARD BAR , R	1	
16	KC001150016	左后保险杠连接架	REAR BRUSH GUARD BAR , L	1	
17	KC001150017	后保险杠保护套	FOAM COVER 3	2	
18	GB5787-86	六角法兰螺栓M8×40	BOLT M8×40	2	
19	KC007010000-1	座垫	SEAT ASSY.	1	
20	GB6187-86	六角法兰自锁螺母 M8	LOCK NUT FLANGE M8	4	
21	KC007020000-1	安全带（含标准件）	BELT.SAFETY	1	

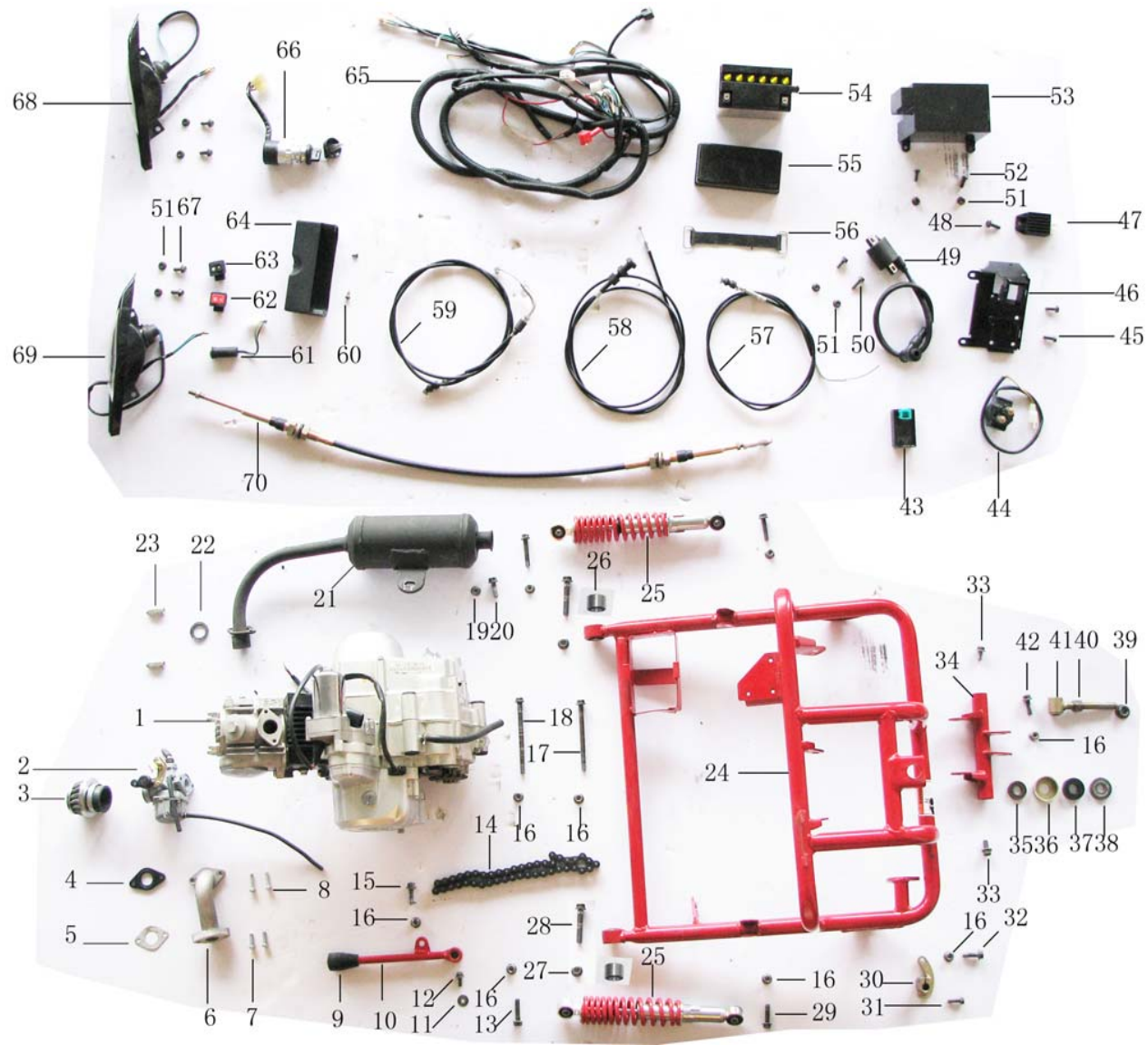
22	KC101350000-3	后货架	CARRIER COMP., REAR	1	
23	GB5787-86	六角法兰螺栓M8×50	BOLT M8×50	2	
24	GB5787-86	六角法兰螺栓M8×35	BOLT M8×35	2	
25	KC002020000-3	油箱	TANK, COMP. FUEL	1	
26	KC003140020	油箱橡胶缓冲垫	RUBBER COVER, CARRIER COMP.	4	
27	GB5787-86	六角法兰螺栓M8×55	BOLT M8×55	4	
28	KA002060100	油箱盖	CAP, COMP. FUEL TANK	1	
29	KA003210100	油管1	TUBE COMP. FUEL. 1	1	
30	KA001850050	保护网1	TUBE SPRING 1	1	
31	KA001860050	油管卡簧	CIRCLIP, FUEL TUBE	4	
32	KA003210100-1	油管2	TUBE COMP. FUEL. 2	1	
33	KA001850050-1	保护网2	TUBE SPRING 2	1	
34	KA002090000	过滤器	FILTER	1	



NO.	Part NO.	Description	Description in English	数量Qty	
1	KC006050000	方向盘	STEERING COMP.	1	
2	GB6187-86	六角法兰自锁螺母 M8	LOCK NUT FLANGE M8	12	
3	KC006050001	方向器压块	CLUMP	2	
4	GB5787-86	六角法兰螺栓M6×16	BOLT FLANGE M6×16	3	
5	GB6187-86	六角法兰自锁螺母 (M6)	LOCK NUT FLANGE (M6)	3	
6	KC006050002	套管	PIPE	2	
7	GB5787-86	六角法兰螺栓M8×60	BOLT FLANGE M8×60	2	
8	KC101310000	方向器转向轴	STEERING SHAFT	1	
9	KC003020000	边向器螺栓盖	COVER, STEERING BOLT	1	
10	KC006030002	支撑固定轴	SHAFT OF KNUCKLE SUPPORT	2	
11	KC006030003	右支撑轴衬套	BUSH OF KNUCKLE SUPPORT	2	
12	KC006030004	衬套坐	BUSH PEDESTAL	4	
13	GB6187-86	六角法兰自锁螺母 M12*1.25	LOCK NUT FLANGE M12*1.25	2	
14	KC006030001	左支撑轴	KNUCKLE SUPPORT, LH	1	
15	KC006040001	右支撑轴	KNUCKLE SUPPORT, RH	1	
16	GB/T91-86	开口销 Φ2.0×32	PIN Φ2.0×32	5	
17	GB6187-86	六角法兰自锁螺母 M10	LOCK NUT FLANGE M10	1	
18	GB/T95-85	平垫 φ10	WASHER φ10	1	
19	KC006030005	方向柱	STEERING PILLAR	1	
20	KC001810030	踏板扭簧	SPRING, BRAKE PEDAL	2	
21	KC10116001A	刹车踏板组件	PEDAL COMP., BRAKE	1	
22	KC10115001A	油门踏板组件	PEDAL COMP., THROTTLE	1	
23	KC101930040	油门、刹车踏板轴	SHAFT FOR THROTTLE PEDAL	2	
24	GB5787-86	六角法兰螺栓M8×40	BOLT FLANGE M8×40	1	

25	KC006020400	调节螺母M8	NUT ,HEX M8	2	
26	KC003330000	油门橡胶块	RUBBER, THROTTLE	1	
27	KC003340000	刹车橡胶块	RUBBER, BRAKE	1	
28	KA10601051A-1	左、右连接杆	TIE ROD	1	
29	KA10601051A-2	左、右连接杆	TIE ROD	1	
30	GB/T93-87	M10弹垫	SPRING WASHER 10	4	
31	GB/T95-85	M10平垫	WASHER Φ10	4	
32	GB6178-86	六角开槽螺母M10	NUT, RR.AXLE M10	4	
33	KC101330000	后轮轴承座	HOUSING COMP, RR.AXLE BRG	2	
34	KA005510000	轴承6204 2RZ	BEARING 6204 2RZ	2	
35	GB5787-86	六角法兰螺栓M8×16	BOLT FLANGE M8×16	6	
36	GB6187-86	六角法兰自锁螺母 M16	LOCK NUT FLANGE M16	2	
37	KA005060030	平键销	FLAT KEY	2	
38	KA005310200	后碟刹盘组件	DISC, RR. BRAKE	1	
39	GB5787-86	六角法兰螺栓M8×16	BOLT FLANGE M8×16	2	
40	GB5787-86	六角法兰螺栓M6×16	BOLT M6×16	4	
41	KE100531000-2	制动泵	CALIPER HYDRAULICAL BRAKE, RR	1	
42	KC101320100	平键	FLAT KEY	1	
43	GB/T78-2000	内六角锥端紧固螺钉M8×16	BOLT M8×16	1	
44	KA005050030	后轮轴轴套	SHAFT BUSH	1	
45	KA005210030-1	链轮36齿	REAR SPROCKET	1	
46	GB5787-86	六角法兰螺栓M6×16	BOLT M6×16	4	
47	KA005040030-1	后轮轴	AXLE COMP., RR.	1	
48	GB5787-86	六角法兰螺栓M8×25	BOLT FLANGE M8×25	6	
49	KE005040030	前轮毂	HUB, FR. WHEEL	2	

50	KE005520000	轴承6204RZ	AXLETREE 6204RZ	2	
51	KE005520010	轴承6203RZ	AXLETREE 6203RZ	2	
52	KE005520020	前轮毂油封2	DUST SEAL2, FR. HUB	2	
53	KA005060030	衬套	BUSH,	2	
54	GB6178-86	六角开槽螺母 M14×1.5	NUT, RR. AXLE M14×1.5	2	
55	GB/T91-86	开口销 Φ3.2×32	PIN Φ3.2×32	2	
56	KA005020200-1	后辐板轮	RIM, REAR	2	
57	KA005020200-1	后辐板轮	RIM, REAR	2	
58	KC003360000	前轮轴盖	CAP, FR. WHEEL	2	
59	KC003360000	后轮轴盖	CAP, RR. WHEEL	2	



NO.	Part NO.	Description	Description in English	数量Qty	
1	KE002010000	发动机	ENGINE ASSY	1	
2	KC002020000-1	化油器	CARBURETOR ASSY	1	
3	KC0A2030000	空滤器 (含卡箍)	AIR CLEANR ASSY. (CLAMP)	1	
4	50Z 12030	化油器隔热垫	GASKET OF CARBURETOR	1	
5	50Z 12020	进气管胶垫	GASKET,INTAKE PIPE	1	
6	KE002050000	进气管	INTAKE PIPE	1	
7	GB5787-86	六角法兰螺栓M6×25	BOLT M6×25	2	
8	GB5787-86	六角法兰螺栓M6×30	BOLT M6×30	2	
9	KA003380000	倒档器手柄套	cover, lever.	1	
10	KC101370000	倒档手柄	SHIFT GEAR THE POLE	1	
11	GB/T97-85	大平垫 (ø6*18)	FLAT WASHER(ø6*18)	1	
12	GB5787-86	六角法兰螺栓M6×12	BOLT FLANGE M6×12	1	
13	GB6187-86	六角法兰自锁螺母 M8	LOCK NUT FLANGE M8	6	
14	KA005230000	链条420*44节	CHAIN 420	1	
15	GB5787-86	六角法兰螺栓M8×25	BOLT FLANGE M8×25	1	
16	GB6187-86	六角法兰自锁螺母 M8	LOCK NUT FLANGE M8	9	
17	GB5787-86	六角法兰螺栓M8×115	BOLT M8×115	1	
18	GB5787-86	六角法兰螺栓M8×105	BOLT M8×105	1	
19	GB6187-86	六角法兰自锁螺母 (M8)	LOCK NUT FLANGE (M8)	1	
20	GB5787-86	六角法兰螺栓M8×25	BOLT FLANGE M8×25	1	
21	KE0A2040000	排气消声器总成	MUFFLER COMP.,EX	1	
22	KE0A2040001	排气管密封垫	GASKET, EX. PIPE	1	
23	KE002300000	盖形长螺母M6×25	NUT, MUFFLER JOINT M6×35	2	
24	KC00120001A-2	后摇架	REAR SWING ARM COMP.	1	

25	KE006320010	后减震器	ABSORBER ASSY. RR.	2	
26	KC003390000	减震套	RUBBER BUSH, SWING ARM	2	
27	GB6187-86	六角法兰自锁螺母 (M10)	LOCK NUT FLANGE (M10)	2	
28	GB5787-86	六角法兰螺栓M10×55	BOLT M10×55	2	
29	GB5787-86	六角法兰螺栓M8×40	BOLT M8×40	2	
30	KE001830000	换挡摇臂	GEARSHIFT BRAKET	1	
31	GB5787-86	六角法兰螺栓M6×20	BOLT M6×20	1	
32	GB5787-86	六角法兰螺栓M8×25	BOLT FLANGE M8×25	1	
33	GB5787-86	六角法兰螺栓M8×20	BOLT FLANGE M8×20	2	
34	KE001330000	发动机连接器	BRACKET, ENGINE FIXING	1	
35	52155-BCA0-0000	缓冲器垫圈	WASHER, BUFFER PAD	1	
36	KA001550030	缓冲器座	SPACER, ENGINE MOUNT LINK	1	
37	KA003390000	吊架缓冲橡胶圈	BUFFER PAD, ENGINE MOUNT LINK	1	
38	52155-BCA0-0001	缓冲器垫圈1	WASHER, BUFFER PAD	1	
39	GB6187-86	六角法兰自锁螺母 (M12×1.25)	LOCK NUT FLANGE M12 ×1.25	1	
40	90293-BCA0-0000-0C	调整螺母 M12×1.25	NUT, ENGINE MOUNT LINK M12×1.25	1	
41	KE001320030	吊杆	LINK COMP, ENGINE MOUNT	1	
42	GB5787-86	六角法兰螺栓M8×40	BOLT M8×40	1	
43	KC004080000-1	CDI点火器	CDI UNIT	1	
44	KA004050000	起动继电器	STARTING RELAY	1	
45	GB/T818-85	十字盘头螺钉M6×16	BOLT M6×16	2	
46	KA00131001A	电器安装盒	BOX COMP, ELECTRIC	1	
47	KA004040000	调压整流器	RECTIFIER COMP, REGULATE	1	
48	GB5787-86	六角法兰螺栓M6×16	BOLT M6×16	3	
49	KC004090000-1	高压包	COIL COMP. IGNITION	1	

50	GB5787-86	六角法兰螺栓M6×20	BOLT M6×20	1	
51	GB6187-86	六角法兰自锁螺母 M6	LOCK NUT FLANGE M6	8	
52	GB/T818-85	十字盘头螺钉M6×20	BOLT M6×20	2	
53	KA003010000	电器盒	COVER, ELECTRIC BOX	1	
54	KA003360000	蓄电池	BATTERY	1	
55	KA003030000	蓄电池盖	COVER, BATTERY	1	
56	KA001600030	蓄电池绑带	PRESSURE PLATE, BATTERY	1	
57	KC006210000	油门线	CABLE COMP.THROTTLE	1	
58	KC006231000	风门线	CHOKE CABLE	1	
59	KC006220000	刹车线	CABLE COMP. BRAKE	1	
60	GB845-85	自攻螺钉ST4.2×10	screw, ST4.2×10	2	
61	KA004010000	空挡指示	INDICATOR, BLANK	1	
62	KA004020000	熄火开关	SWITCH COMP., IGNITION STOP	1	
63	KA004030000	照明开关	SWITCH COMP., HEAD LIGHT	1	
64	KA003080000	开关下盖	SWITCH LOWER COVER	1	
65	KC004120000-1	主电缆	MAIN WIRE HARNESS	1	
66	KA004010000	点火锁	KEY SET-IGNITION SWITCH COMP.	1	
67	GB5787-86	六角法兰螺栓M6×16	BOLT FLANGE M6×16	4	
68	KC004021000	右大灯组件	HEAD LAMP ASSY.	1	
69	KC004022000	左大灯组件	HEAD LAMP ASSY.	1	
70	KC006230000-3	倒档线	CABLE COMP.REVERSE	1	